



# TOGETHER WE CREATE ENERGY



# BORALEX



## EASTON SOLAR PROJECT OVERVIEW

### PROJECT DESCRIPTION

Easton Solar is a 20 MW solar project being developed by Boralex in the Town of Easton, Washington County. The project will include solar arrays and other project infrastructure such as site roads, substation, and electrical interconnection to the 115 kV line.

Boralex is committed to working with the Town of Easton, Washington County, and other local stakeholders to ensure that the project is properly integrated into the community.

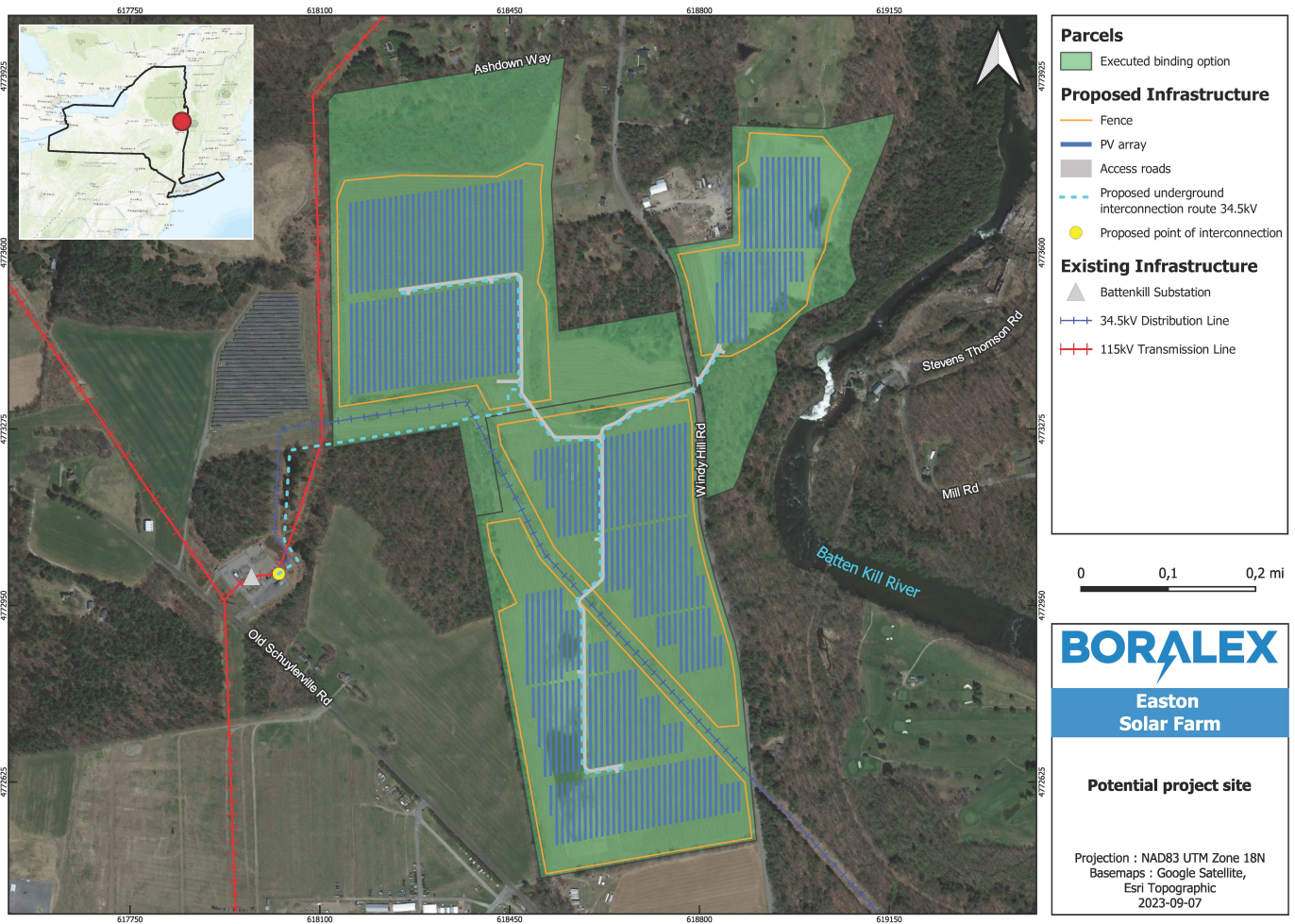
### PROJECT DETAILS

General	
Technology	Solar
Capacity	20 MW
Location	Town of Easton, Washington County, NY
Anticipated Solar Footprint	Approx. 136 acres
Construction	Estimated Q4 2024
Commissioning	Estimated Q4 2025
Point of Interconnection	Old Schuylerville Road
Number of Homes Powered	Approx. 3,600 homes

### PROJECT BENEFITS

The project will offer significant economic, social, and environmental benefits to New York State, Town of Easton and Washington County, including:

- Providing tax **revenues** to the municipalities and local school districts
- Creating approximately **50 full-time equivalent jobs** during construction
- Procuring **local services and materials** during development and construction, boosting the **local economy** and adding commerce for **local businesses**
- Supporting **STEM education** and **workforce development** programs
- Help NYS achieve its goal of **70% clean power** generation by **2030**



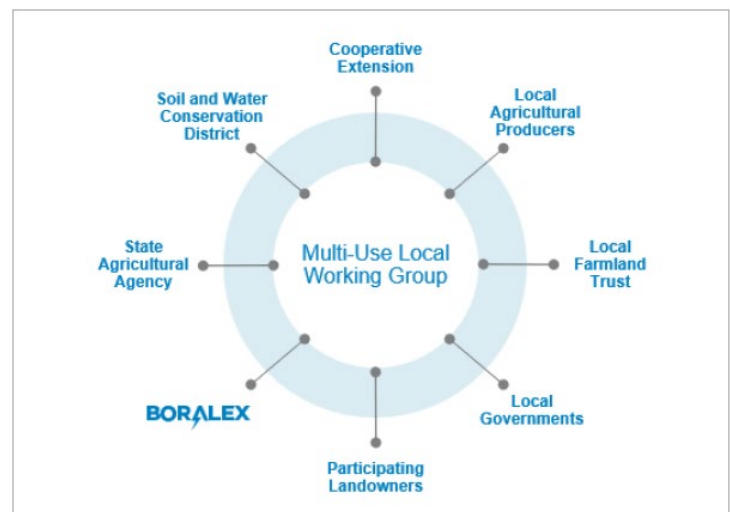
## AGRICULTURAL MULTI-USE

Boralex is committed to designing our projects in a way that will allow for continued agricultural use within our project site.

Using single-axis tracking allows our solar panels to pivot toward the sun throughout the day, leaving substantial open space between the rows, up to 25 feet depending on final project design.

Building off our experience at facilities in France and California, sheep grazing will be used to maintain vegetation at Easton Solar.

Boralex will also convene a local working group, made up of landowners, farmers and other experts, to evaluate multi-use options on the site throughout the life of the project.



## PROJECT UPDATES

For project updates, more information, and to contact the project team, please visit:

[www.boralex.com/projects/easton](http://www.boralex.com/projects/easton)

**BORALEX**  
*Beyond*  
 RENEWABLE ENERGY