

Easton Solar Farm

Visual Screening Plant List

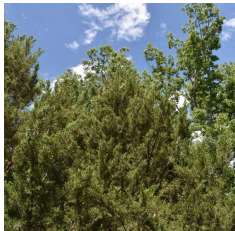
Design Intent

A mix of native evergreen conifers and deciduous trees and shrubs are arranged to mimic the form of the surrounding hedgerows and natural areas. In service of this ecological mimicry, plant material is variable in size; tree height range upon installation will be approximately 4 feet to 8 feet. Species are selected to balance growth rates and visual screening value. For example, Quaking Aspen and Flameleaf Sumac are fast growing and colonizing plants, which will provide quick cover as slower-growing evergreen species fill in over several more seasons.



Eastern White Pine

Pinus strobus
ht. 50-60 ft.



Hillspire Eastern Red Cedar

Juniperus virginiana 'Hillspire'
ht. 15-20 ft.



White Spruce

Picea glauca 'Densata'
ht. 20-40 ft.



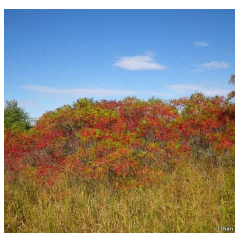
Quaking Aspen

Populus tremuloides
ht. 35-50 ft.



White Oak

Quercus alba
50-80 ft



Flameleaf Sumac

Rhus copallina
ht. 7-15 ft.