



Welcome

Thank you for coming to the
**Chatham Battery Energy
Storage System Project**
Open House.

Have more questions or looking for additional information?

Please visit Boralex's project website for Chatham:

www.boralex.com/projects/chatham/

About Boralex

Canadian-based company

Major player in renewable energy
in **North America** and **Europe**

More than **30 years** of experience,
including **10 years in Ontario**

2,476 MW of installed capacity

We **develop, build and operate**
wind, solar, storage and hydro
production sites

Community Involvement

We develop strong relationships

Our long-term perspective helps us to develop long-term and strong relationships with the host communities with the goal of becoming good neighbors for decades.

We listen to the communities

During the project lifecycle, we maintain a presence in the community and ensure there is an engagement and follow-up process to hear and respond to comments and suggestion expressed by the community.

We support local economy

In addition to the jobs created during the development, construction and operation of our plants, we try to source goods and services from local suppliers throughout the life of our projects.

We give back to our hosts

Social involvement is of great importance to Boralex. Every year, we support local non-profit organizations and charitable events to contribute further to the vitality of our host communities.

We care for the environment

Environmental issues are a high priority in all decisions we make, and we employ best practices with regard to biodiversity protection, habitat conservation, waste management and air emission reduction.



Context

Long-Term RFP and Expedited Process

- Ontario is entering a period of emerging system needs that will require new electricity resources **this decade**.
- The IESO is competitively securing up to **1,500 MW** through an **expedited procurement** process, of which 900 MW are targeted to be procured from storage and new-build electricity resources able to commit to commercial operation in **2025**.
- Up to **2,500 MW** of capacity will also be sought through the first **Long-Term Request** for Proposals (LT1 RFP), focusing on meeting emerging system reliability needs.
- The LT1 RFP will acquire capacity services from new-build electricity resources with a commercial operation date of **2027**, with the option of longer terms for those able to reach commercial operation earlier.

Processes Milestones		
	Expedited Process	LT1 RFP
Qualified Applicants Announced	August 23, 2022	August 23, 2022
Final RFP Posted	November 1, 2022	January 30, 2023
Proposal Submission	December 20, 2022	July 2023
Contract Award	February 28, 2023	October 2023



CHATHAM BESS PROJECT

- Located in **Chatham-Kent**
- **Adjacent** to Hydro One existing Chatham Switching Station
- Capacity targeting **300–600MW** capacity for **4 hours**
- Approx. **30 acres** study area

Projects Boundaries

Chatam

Proposed Infrastructure

Point Of Interconnection

Potential Interconnection Line

Existing Infrastructure

230kV Transmission Line

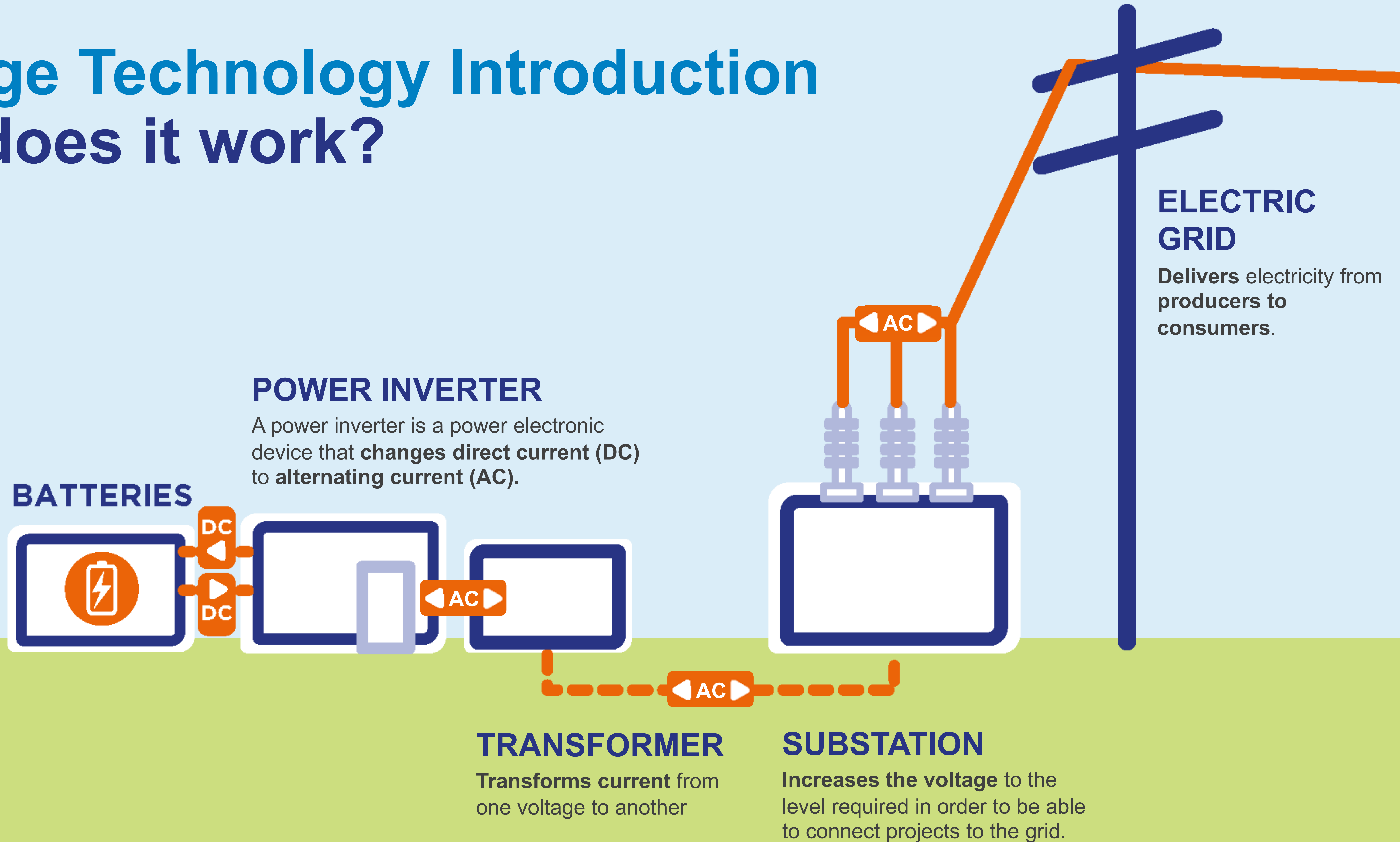
Administrative Boundaries

Township



Storage Technology Introduction

How does it work?



Permitting Process



Environmental Assessment & Permitting

Class Environmental Assessment (EA) for Minor Transmission Facilities to be obtained from Hydro One

Environmental Compliance Approval (ECA) for noise to be obtained from the Ministry of Environment, Conservation and Parks

Municipal building permits

Other permits and approvals as determined by baseline condition characterization



Construction

Implement standard construction mitigation practices (e.g., dust management controls, compliance with municipal noise by-laws)

Elements that will be carefully considered

Air Quality
Sound
Environment & Wildlife
Local Traffic
Safety
Fire Management



Operation

Continued compliance with ECA requirements

Elements that will be carefully considered

Sound
Environment
Safety
Fire Management

Sound Assessment & Mitigation



Mitigation Measures

Development

- Sound impact assessment is underway by independent experts
- The results of the assessment will be presented in due course

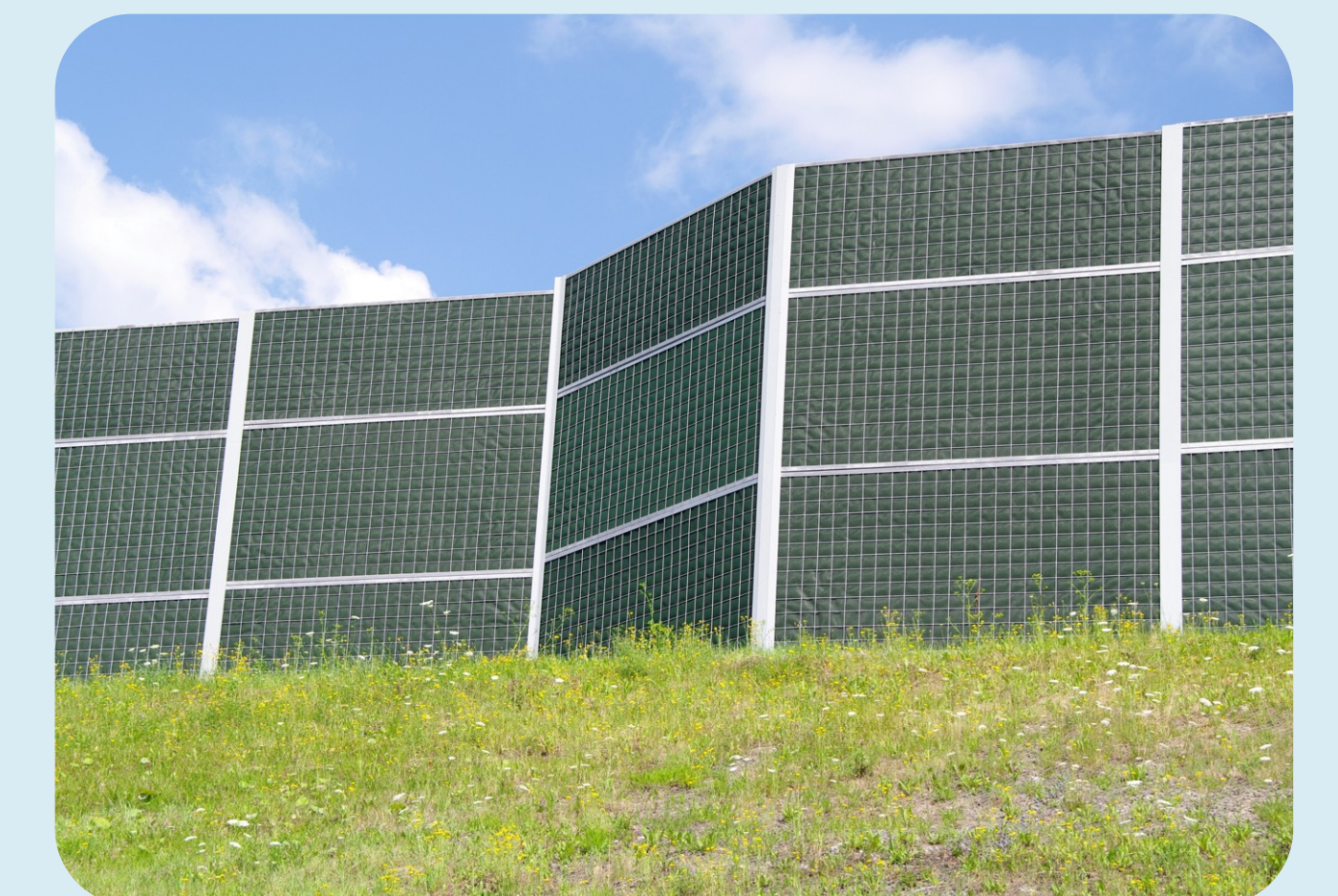
Construction

- Will take place during business hours
- Will comply with the municipal by-law

Operation

- Soundproof walls and other mitigation measure will be implemented to ensure compliance with the standards set by the Ministry of the Environment, Conservation and Parks Environmental Noise Guideline - Stationary and Transportation Approval and Planning

Examples of sound barrier



What a BESS Project Looks Like

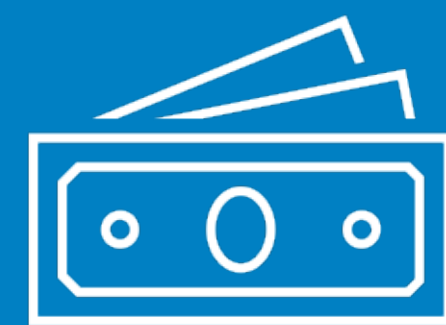


Anticipated Benefits



Jobs

Project construction would provide approximately **200 jobs**. About **2-3 full time equivalent employees** would be needed for operation, likely hired from the **host communities**.



Local Procurement

During construction, in addition to payroll, Boralex estimates **materials and services** would be procured locally (e.g. aggregates, civil works, machinery). Boralex would also pursue donations and sponsorship opportunities in consultation with host towns and local stakeholders.



Ratepayers

Could provide **significant benefits to Ontario's ratepayers** by reducing the need and cost associated with using gas-fired power plants during times of peak demand.



Environment

Would have a positive impact on the **environment and fight against climate change** by ensuring **the reliability and stability of the grid** and fostering the **penetration of renewable energies**. It would also **reduce harmful emissions** as it lightens the load of traditional energy generation systems that rely on fossil fuels, such as gas-fired power plants.

Supporting the Local Community

Boralex is dedicated to being a good neighbor and an integrated part of the community.

Every year we support local non-profit organizations, charities, and events that contribute to the vitality of the area.

We believe a successful project benefits the entire host community.



In 2021, Boralex contributed nearly **\$750,000** to **host communities** through our donations and sponsorships programs.

Where are we?

Activity Status

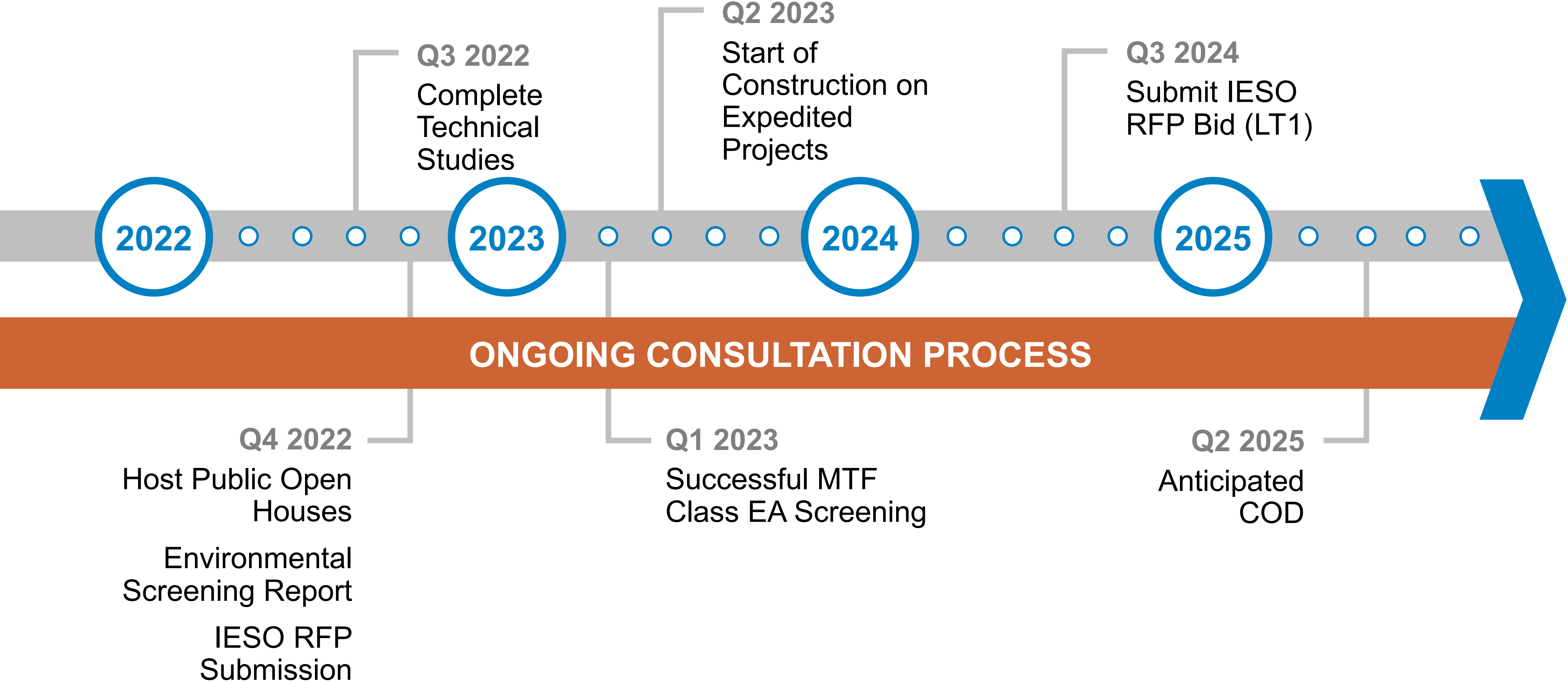
Project Initiation

- Determine Project Location ✓
- Preliminary design Underway
- Issue Project Notification ✓

Baseline Condition Characterization

- Cultural heritage ✓
- Stage 1-2 Archaeological Assessment Underway
- Natural Heritage Assessment ✓
- Sound Impact Assessment Underway

Anticipated Timeline





Thank you !

Have more questions or looking for additional information?

Please visit Boralex's project website for Chatham:

www.boralex.com/projects/chatham/